

# FLASH

## MANUAL

---

■ EXPERT ADVISOR



# CONTENT

---

FLASH INTRODUCTION .....	2
FLOW CHART.....	3
BASIC SETTING.....	4
ENTRY SYSTEM – MAIN ENTRY SETTINGS .....	5
ENTRY SYSTEM – ADDITIONAL AUXILIARY ENTRY SETTINGS .....	9
MACD FILTER .....	10
VOLATILITY FILTER.....	12
CORRELATION FILTER .....	14
CCY POWER FILTER.....	16
ENTRY ORDER MANAGEMENT .....	19
EXIT SYSTEM.....	21
TRADING SESSION .....	26
DISPLAY – MISC.....	27

# Flash Introduction

Flash is a proprietary trading program that uses a strategy of capturing key price level breakouts. It constantly scans the market for support and resistance levels, using breakout positions to enter the market.

The basic entry principle is based on key price levels. When the price breaks above the upper key price level, a buy order is executed. Conversely, if the price is below the lower key price level, a sell order is executed. Different auxiliary entry settings are added, such as: AI direction control, MACD technical indicator, currency volatility, currency correlation, currency power and other indicators to increase the accuracy of entry.

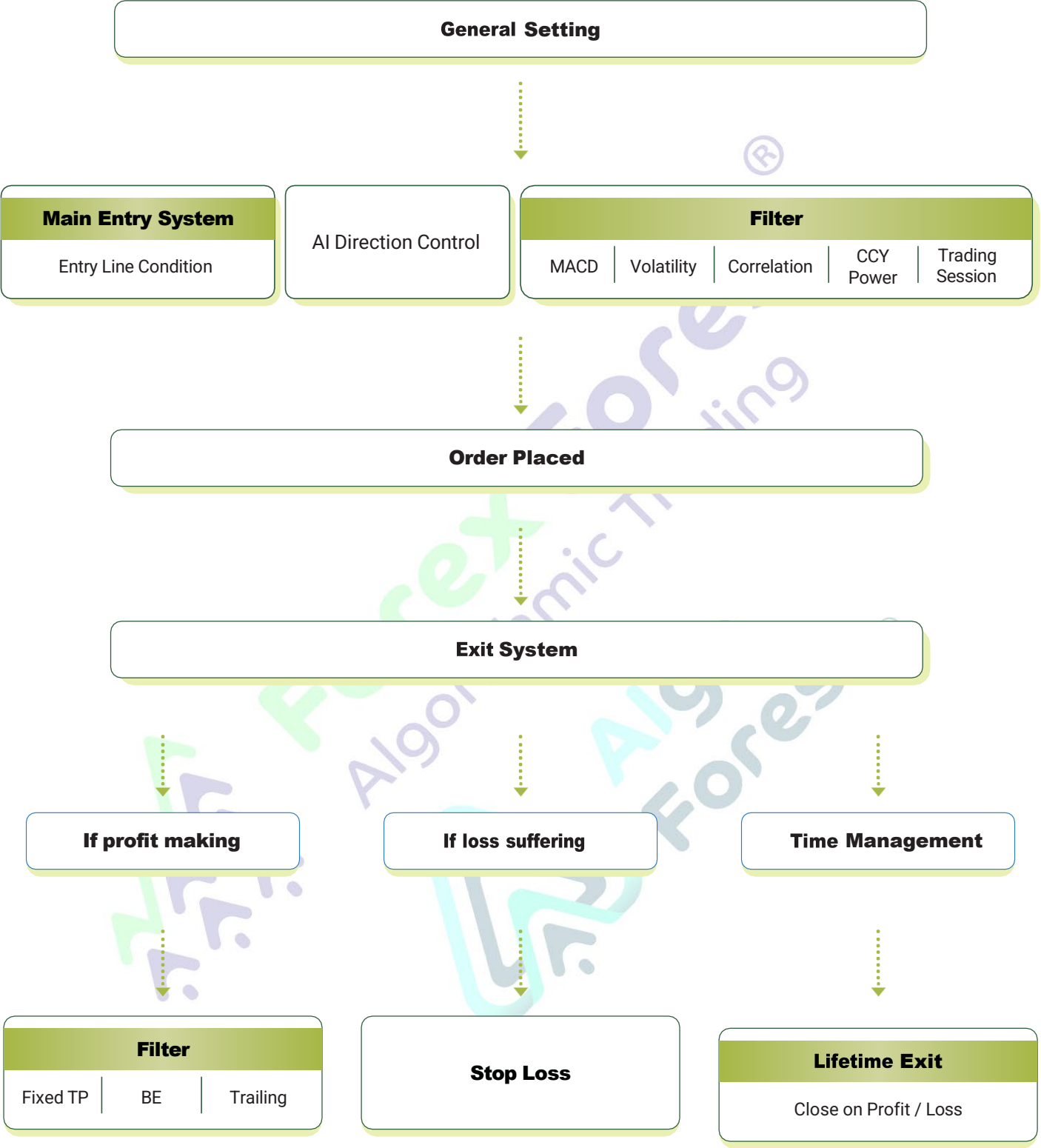
All trades include protective stop losses, as well as moving tracking, break-even, and a flexible economic news filter.

---

## Flash Key Features:

- Unless otherwise specified, the main input values for Flash are based on Points.
- Uses the latest CODING technology to prevent PC or VPS overload.
- Using API technology can promote the efficient implementation of Flash strategy solutions.
- Can cooperate with other EAs and scripts.
- Currency strength indicator filter can be enabled.
- Has spread and slippage controls, which can limit transactions when the spread is too large.

# Flow Chart



## Basic Setting

ab	=== BASIC SETTING ===	=== Basic Setting ===
123	Trade Mode	Open and Close Trades
1/2	Close Only Mode when above DD% (0=not used)	15.0
1/2	Reset Trade Mode when below DD% (-1=not used)	0.0
123	HFT Mode (10x speed up)	Off

### Trade Mode

1. Open New Trades Only.
2. Close Existing Trades Only.
3. Open and Close Trades.

### Close Only Mode when above DD%

- When the account drawdown is greater than the specified value, only existing positions can be closed.
- 0 means this function is not used.

### Reset Trade Mode when below DD%

- When the account drawdown is less than the specified value, it will be reset to the original trading mode.
- -1 means this function is not used.

### HFT Mode

1. On: The EA calculates continuously every second, even if the selected currency pair has no price fluctuations, it will still calculate continuously.
2. Off: Only calculates when the selected currency pair has price fluctuations.

High-frequency trading mode is more resource-intensive and is usually only used for extremely fast entry strategies, such as news trading or using low-timeframe CCY Power breakouts to enter the market, to avoid entry and exit delays.

## Entry System – Main Entry Settings

### Entry Line Condition

ab	=== ENTRY SYSTEM - MAIN ===	=== Entry Line Condition ===
123	Check Timeframe	M30
123	Check Start	1
123	Check Level	3
123	Check Distance in Points	200
123	Entry Line Displacement in Points (0-not u...	10

### Check Timeframe:

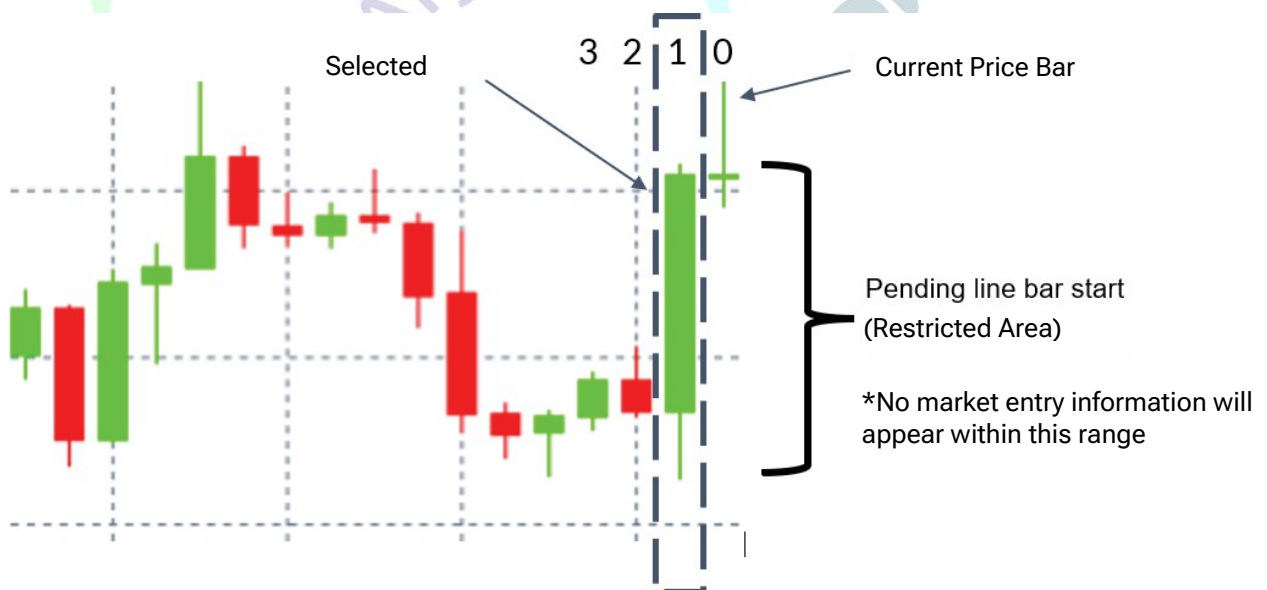
1. M30    2. H1    3. H4

### Check Start Candle used as the check range

- Use the highest and lowest price positions of this candle as a range where no entry will occur (Pending Line Bar Start).
- Must enter a positive integer (0~infinite).
- The current price candle is 0, the one to the left is 1, and so on.
- Please note: If the current price candle is used as the check range (i.e. Check Start=0), the Open Price will be used for calculation, which is equivalent to no Pending Line Bar Start. When the EA is first placed on the chart, the High Low of Bar 0 will be used as the check range.

### Example:

Check Start =1





Thank you for reading

### **Full Manual Availability**

This document contains only the first five pages of the complete user manual. The full version of the manual is provided upon purchase of the Expert Advisor (EA). If you have already purchased the EA and have not received the full manual, please contact our support team for assistance ([info@forexforest.com](mailto:info@forexforest.com) / [info@algoforest.com](mailto:info@algoforest.com)).